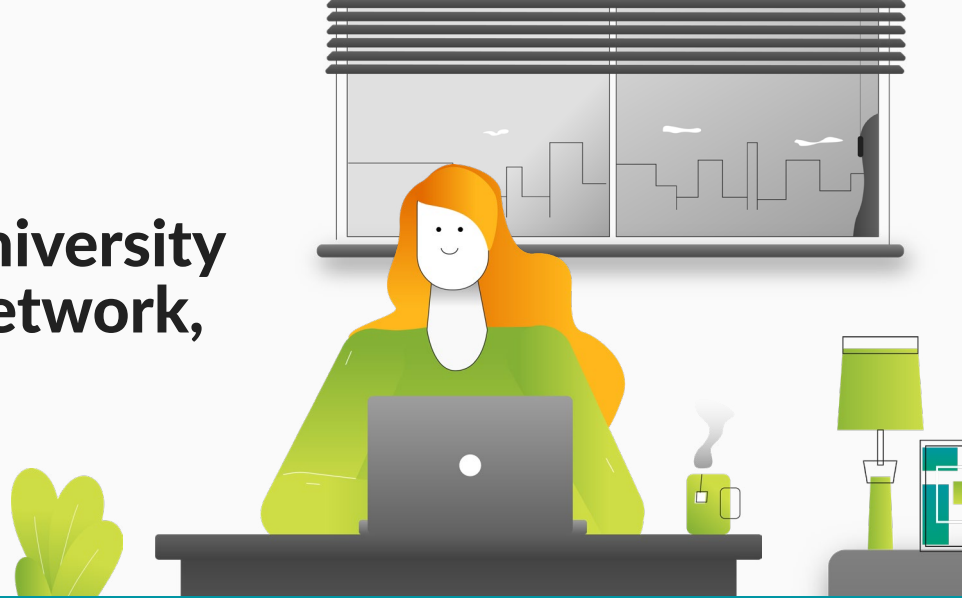


# Every college and university needs the Juniper network, driven by Mist AI.

Here's why.

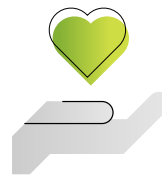


Deliver innovative and competitive services that meet the needs of today's students and academics, on and off campus; achieve academic, pastoral, security, and safety objectives; and reduce operational costs, while increasing student retention and driving additional revenue.



## Seamless Hybrid Education and Research

- Blend traditional on-campus delivery with virtualized delivery that can take place anywhere.
- Deliver a consistent and assured user experience that is optimized for quality as well as connectivity, regardless of locality.



## Student Safety and Wellbeing

- Use Mist's built-in virtual location services for footfall tracking, proximity tracing, and congestion alerting to create safe spaces and help limit the transmission of Covid-19.
- Analyze footfall data to understand student engagement, so you can spot those consistently engaging in campus life, and those who are not and may be struggling, or in need of help.
- Enable SOS services, such as Uber support.



## Facilities Management

- Plan smarter use of campus resources and manage space effectively, using footfall analytics.
- Reduce heat, light, and energy consumption in the areas not being used.
- Ensure pedestrian areas are well-lit at the right times.
- Locate fixed assets and support IoT sensors for CMMS and equipment monitoring.
- Locate misplaced mobile assets that have Bluetooth tags.



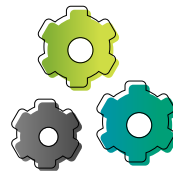
## Technology Equality

- Extend your enterprise-level network right into the home (or other location) by plugging a Mist Access Point (AP) into the router.
- If a student isn't getting the best possible experience, see what the issue is by using AI and ML to build a profile of the entire user experience, from the client device to the cloud.
- Identify what's needed and provide the relevant support (whether a replacement laptop, an upgraded internet connection, or expert guidance to overcome technical issues, such as incorrect configuration).



## Secure Data and Assets

- Protect your confidential data, research, and intellectual property across the network, with enterprise-level security extended to your remote users.
- Find people, places, and things on campus using Mist's built-in location services. If a lost laptop or microscope is Bluetooth-tagged, you'll still be able to find it.



## Reduce Helpdesk Workload

- Stand back and let Marvis, Mist AI's Virtual Network Assistant, monitor the network and carry out proactive remediation to continually optimize the user experience.
- Let automated troubleshooting dramatically reduce the number of network tickets while fixing issues more and more quickly as it learns over time.



## Student Engagement

- Provide localized services on campus, such as turn-by-turn wayfinding and directions.
- Issue timetable reminders.
- Use the accuracy of virtual beacons (under 1m) to deliver on-the-spot information, such as alerts, menus, or local offers.
- Harvest footfall and participation analytics to understand and respond to class attendance trends and anomalies.



## Recruitment

- Use location services to deliver interactive, guided tours that enrich campus open days and ensure the university puts on its best face when attracting new students.
- Provide virtualized learning, teaching, and research services to students, educators, and academics unable to travel, or who live overseas – a significant global opportunity for universities and colleges to engage with new and diverse markets.

### No Batteries Required

Juniper's AI-driven network has location services built in: virtual Bluetooth LE beacons with directional antenna array are built into every access point.

There are no complex architectures with limited scale, no battery beacons, and no time-consuming and costly fingerprinting.

### Deployment is Swift and Straightforward

Mist APs only need to be plugged in to be serving within minutes. This 'plug and play'-style approach includes automatic configuration, which makes deployment exceptionally easy – you can even send them in the mail to remote users. This also makes migration a straightforward exercise that won't require thousands of (expensive) technical man-hours to be spent on repetitive configuration tasks.

Our Higher Education Variety Show features real-world examples, demos and technical insight.

Watch the video:  
[juniper.net/higher-ed-variety-show](http://juniper.net/higher-ed-variety-show)

Juniper has an expert team dedicated to supporting the networking needs of higher education institutions.

Connect with our specialists:  
[juniper.net/higher-ed-contact-form](http://juniper.net/higher-ed-contact-form)



**Corporate and Sales Headquarters**  
Juniper Networks, Inc.  
1133 Innovation Way  
Sunnyvale, CA 94089 USA  
Phone: 888.JUNIPER (888.586.4737)  
or +1.408.745.2000  
Fax: +1.408.745.2100  
[www.juniper.net](http://www.juniper.net)

**APAC and EMEA Headquarters**  
Juniper Networks International B.V.  
Boeing Avenue 240  
1119 PZ Schiphol-Rijk  
Amsterdam, The Netherlands  
Phone: +31.207.125.700  
Fax: +31.207.125.701

PN: 9040177-001-EN